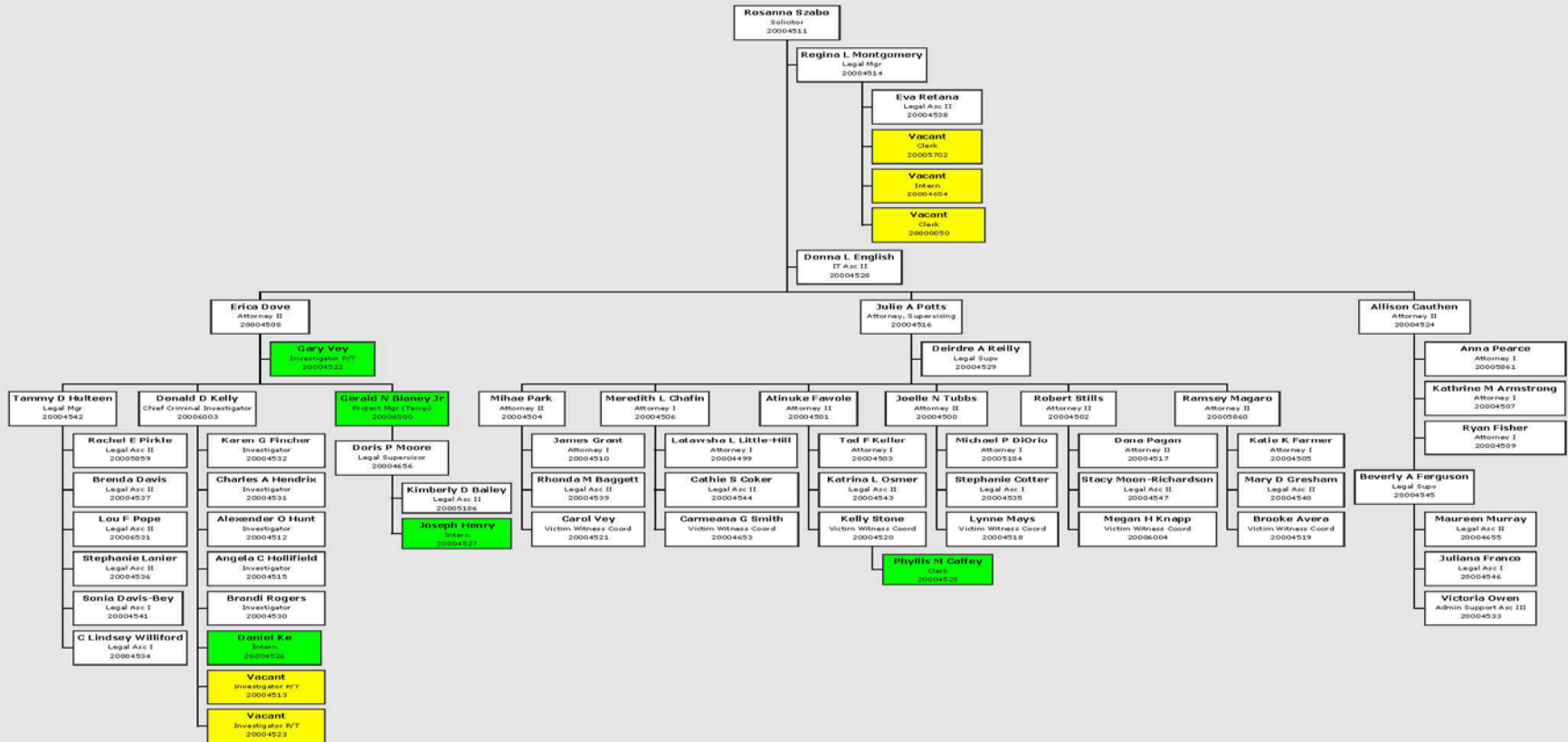




Gwinnett County Solicitor's Office
2012 Budget Presentation
September 7, 2012

ORGANIZATIONAL CHART

SOLICITOR GENERAL'S OFFICE



CRIMINAL JUSTICE REFORM

House Bill 1176

- Effective as of July 1, 2012
- Increases jurisdictional amounts on property/theft crimes from \$500 to \$1,500
- Increases jurisdictional amounts on shoplifting from \$300 to \$500
- Creates a new Misdemeanor Offense of Forgery
- Will increase our overall caseload approximately 15 percent to 20 percent or about 2,000 cases

PAC CORRESPONDENCE

Projected Case Load Increase for House Bill 1176



Prosecuting Attorneys' Council of Georgia

CHARLES A. SPARGE
Executive Director

FREDRIC D. BRIGHT
Chair
District Attorney
Dodge Judicial Circuit

LESLIE ABERNATHY
Vice Chair
Solicitor-General
Forsyth County

CATHY HARRIS BELAR
Secretary
District Attorney
Alapaha Judicial Circuit

NINA MARKETTE BAKER
Solicitor-General
Troup County

RICHARD CURRIE
District Attorney
Waycross Judicial Circuit

DENISE FACCHINI
District Attorney
Cowdell Judicial Circuit

PATRICK H. HEAD
District Attorney
Cobb Judicial Circuit

J. DAVID MILLER
District Attorney
Southern Judicial Circuit

STEPHANIE WOODARD
Solicitor-General
Hall County

Georgia Association of Solicitors-General

RE: HB 1176 – Projected Case Load Increase

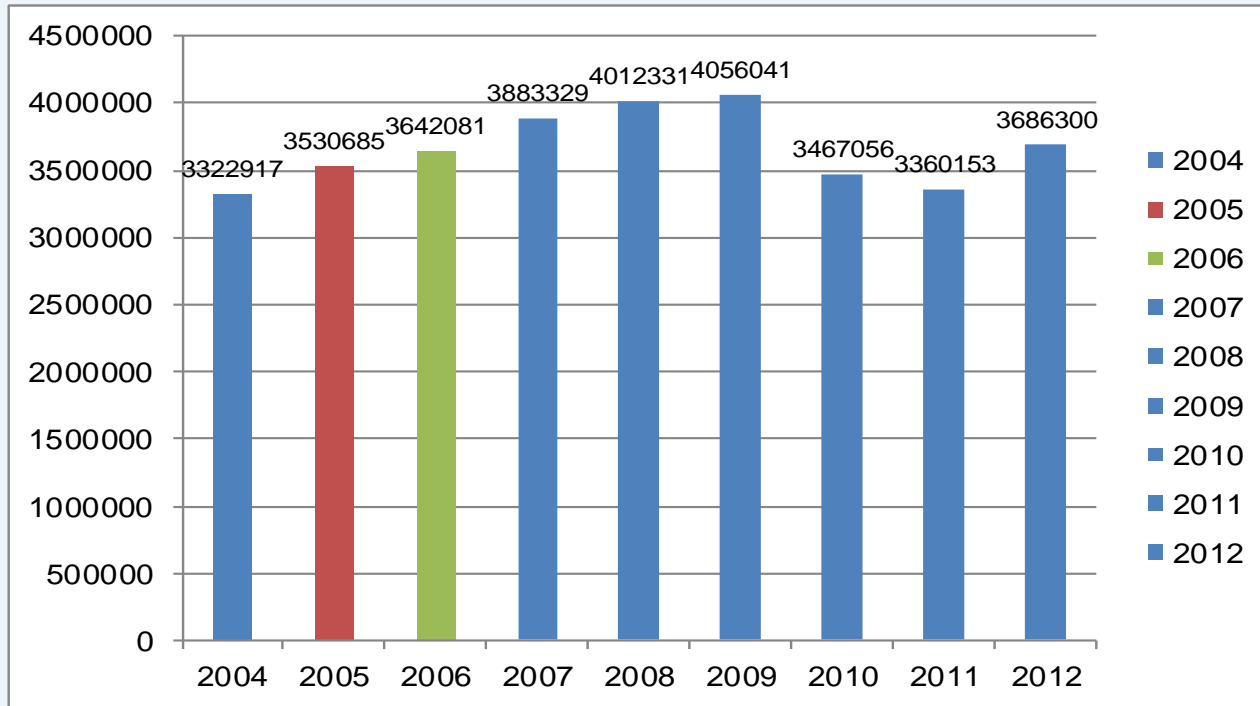
Dear All,

As a result of legislation enacted during the 2012 Georgia General Assembly, specifically HB 1176, it is projected that the case load for Solicitors-General offices across the state will increase dramatically. A realistic numerical value cannot yet be determined due to the fact that this piece of legislation went into effect July 1, 2012 and the true impact has not yet come to fruition; however, we believe that this is a factor that should be strongly considered while determining resource allocations for the Solicitors-General offices in FY2013.

Sincerely,

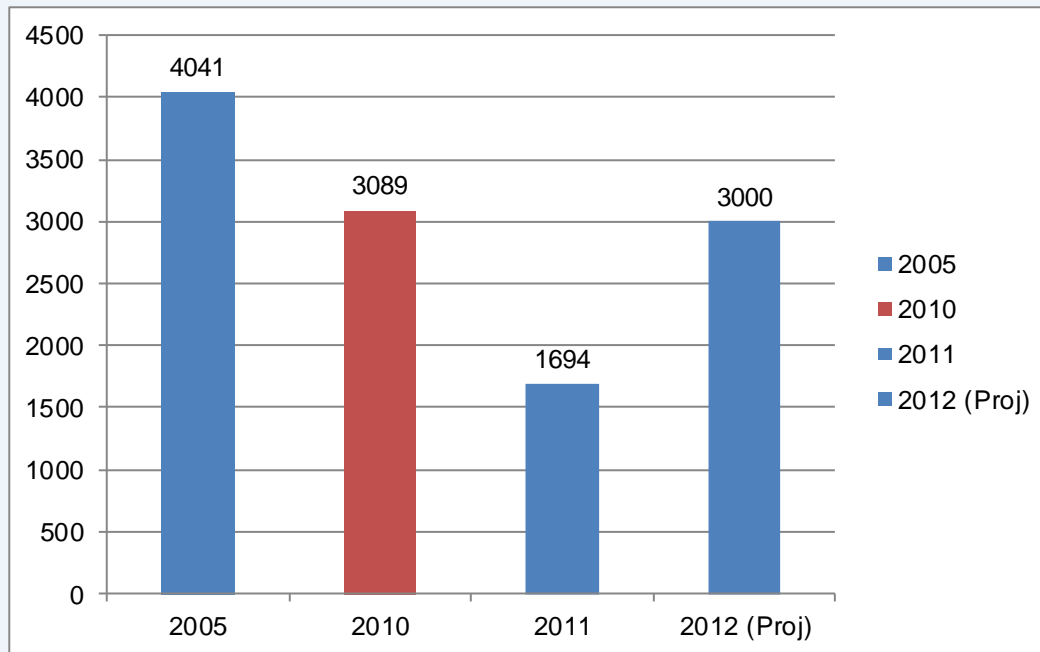
Executive Director
Prosecuting Attorneys' Council

PERSONNEL SERVICES

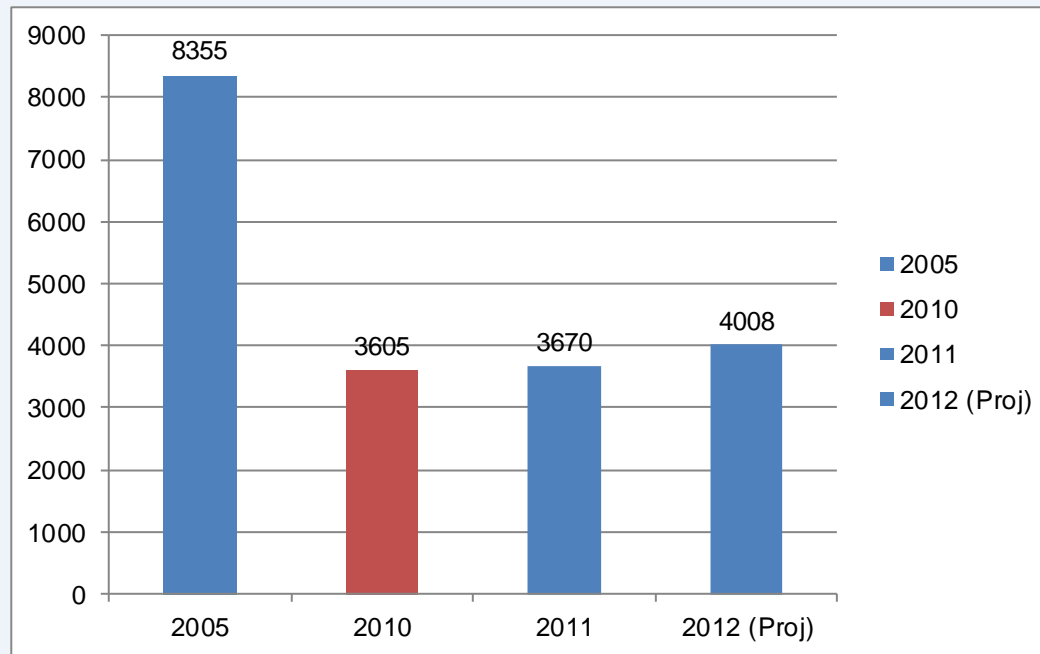


Year	General Fund	VAP Fund
2004	2,968,658	354,259
2005	3,138,337	392,348
2006	3,271,070	371,011
2007	3,525,373	357,956
2008	3,533,825	478,506
2009	3,620,159	435,882
2010	3,078,783	388,273
2011	2,990,458	369,695
2012 (Proj)	3,194,138	492,162

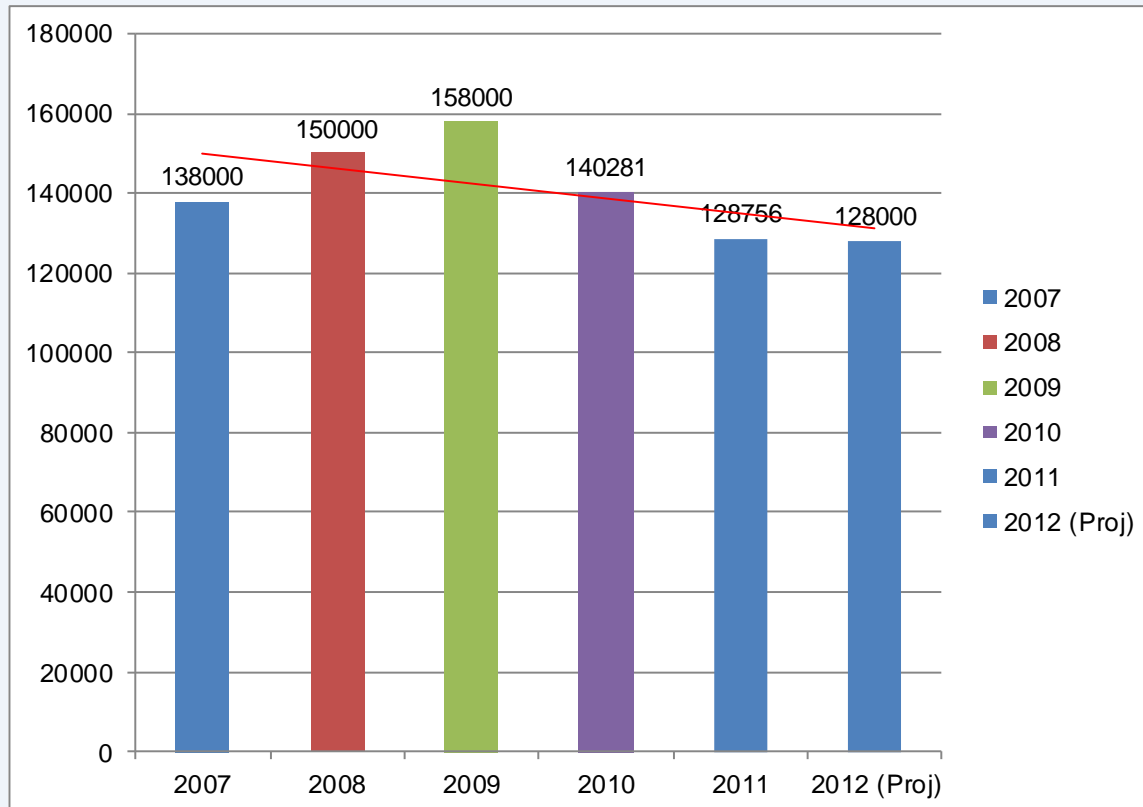
SUBSCRIPTION COST



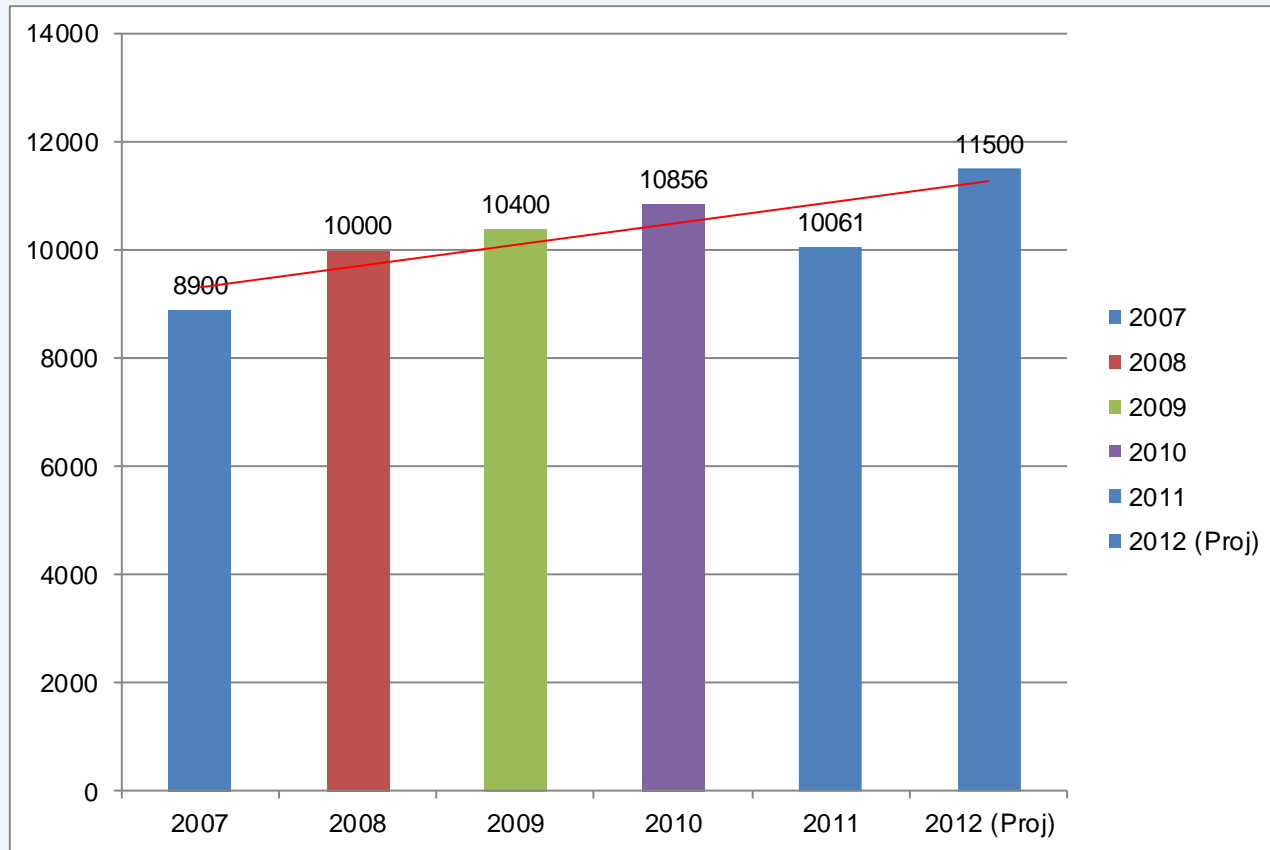
FUEL COST



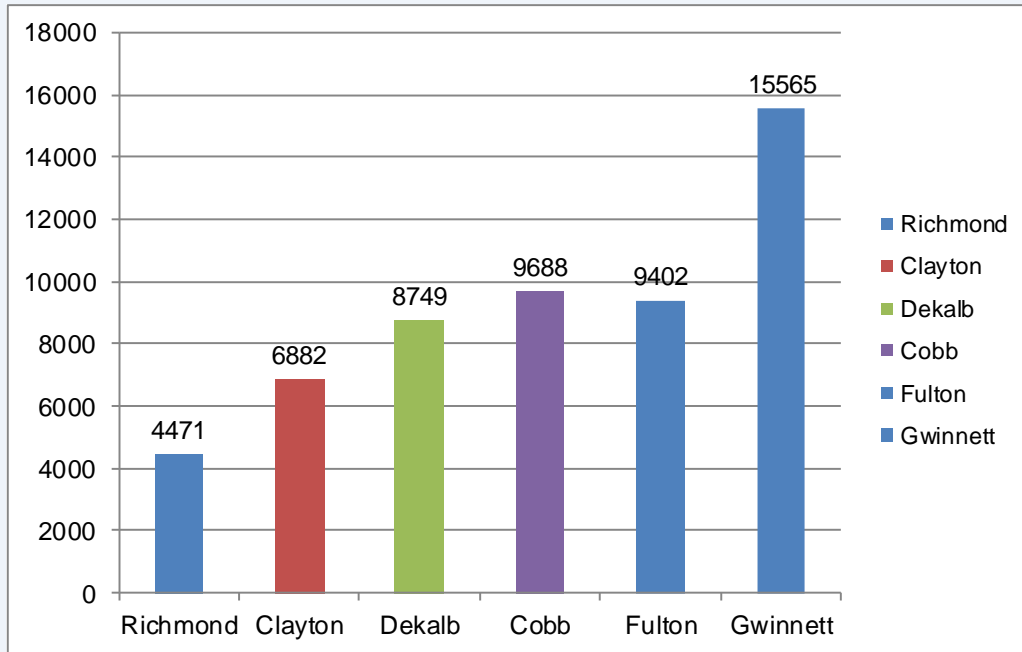
RECORDER'S COURT CITATIONS RECEIVED



STATE COURT CASES RECEIVED

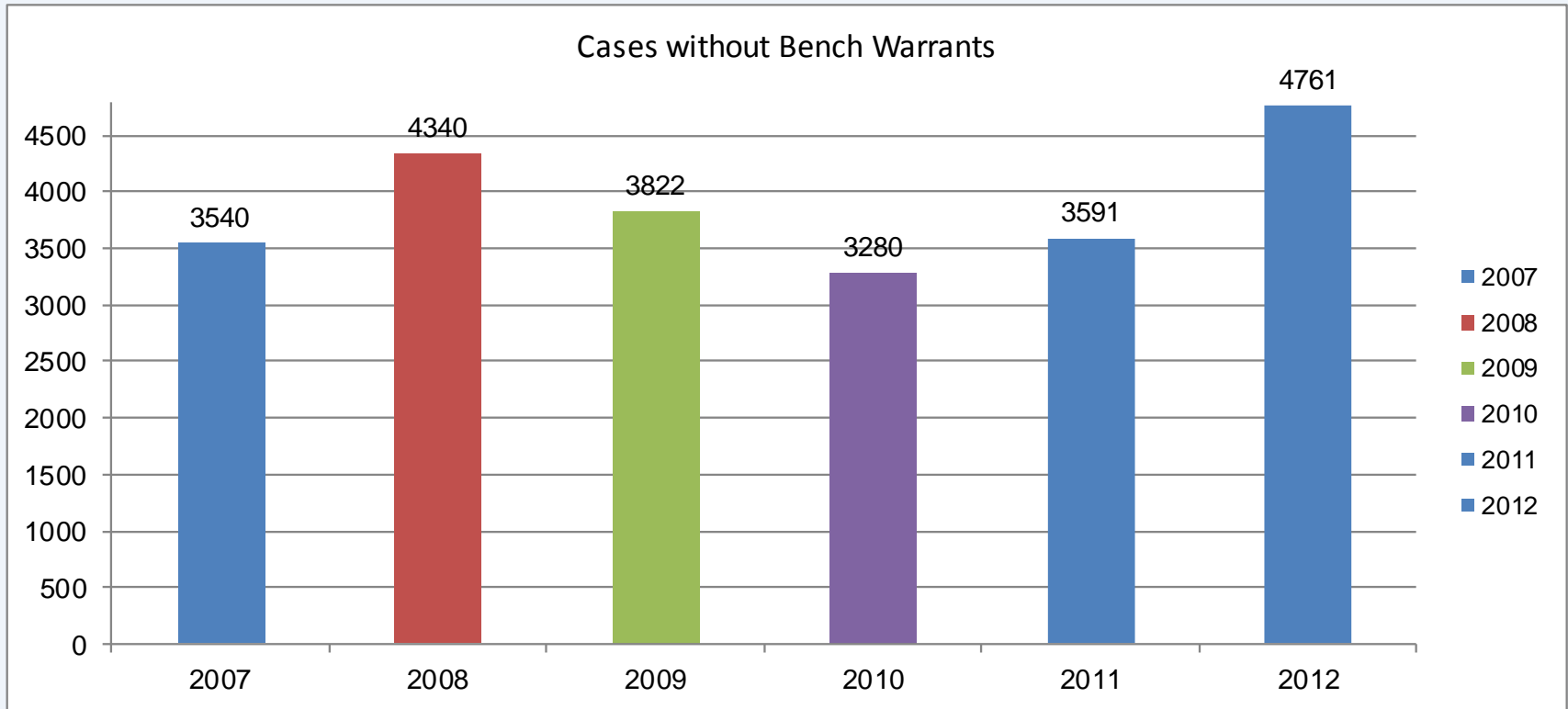


STAFFING COMPARISON PER CAPITA

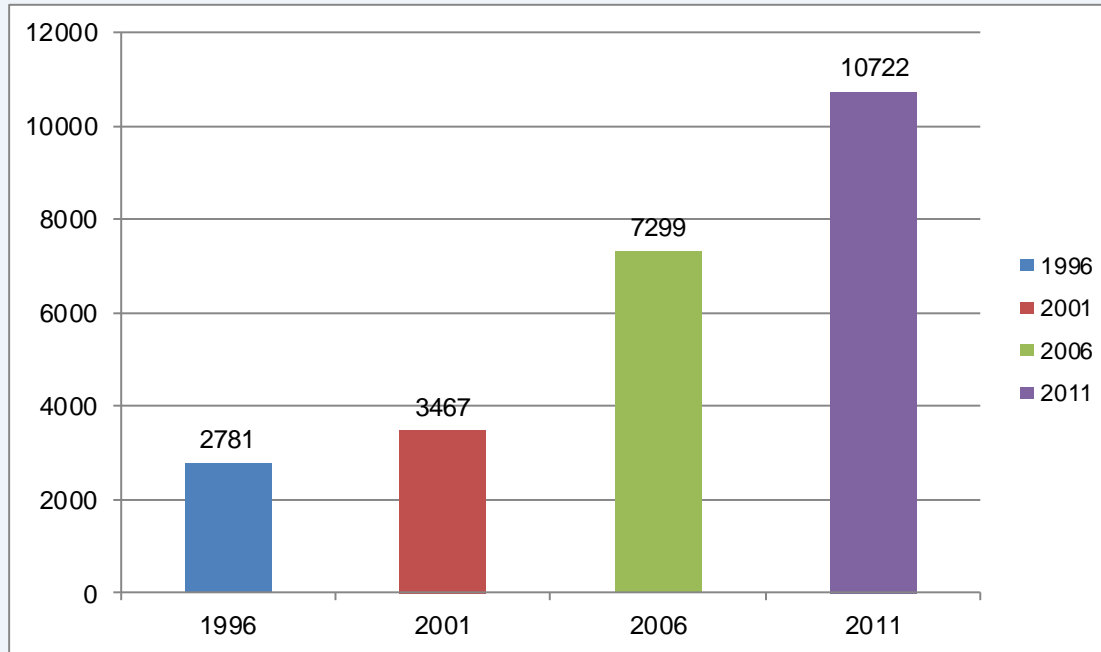


County	Judge	Staff	Population	Per Capita
Gwinnett *	6	53	824,921	15,565
DeKalb	7	80	699,893	8,749
Cobb *	12	72	697,553	9,688
Fulton	10	101	949,599	9,402
Clayton	5	38	261,532	6,882
Richmond	5	45	201,217	4,471

STATE COURT PENDING CASES



TOTAL # OF CASES SCHEDULED FOR TRIAL CALENDARS



YEAR	Total Cases by Year	Average # of Cases on Calendar
1996	5,920	60
2001	9,402	60
2006	8,061	120
2011	9,985	170