

# JUVENILE COURT

2013 BUDGET  
PRESENTATION



# DECISION PACKAGE

*In 2009, the Guardian's Division consisted of 6 attorneys. One of our attorneys retired when offered the early retirement package. Since this time we have been handling the workload with 5 attorneys.*



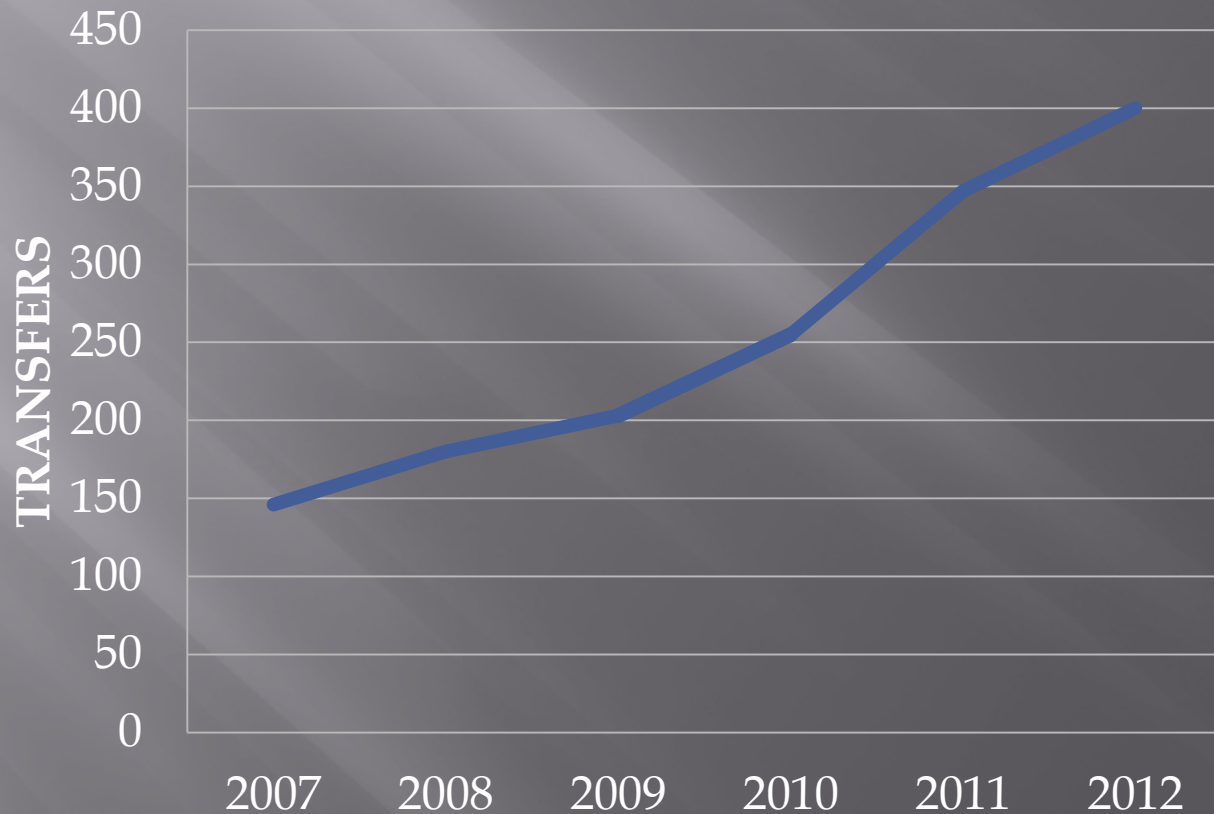
# DECISION PACKAGE

*Custody Transfers and Designations from Superior Court have gone up from 146 in 2007 to 346 in 2011. We are on track to reach 400 Transfer Cases in 2012.*



# DECISION PACKAGE

## *CUSTODY TRANSFERS*



# DECISION PACKAGE

*Transfer Cases from Superior Court are the most complex and labor intensive cases in Juvenile Court. These cases require extensive preparation and court time for our Attorneys.*



# DECISION PACKAGE

*This increased caseload along with the shortage of personnel is jeopardizing the ability of the attorneys to adequately prepare for and represent the children who are their clients.*



# DECISION PACKAGE

*We are asking to fill an Attorney II  
position in the Guardian Ad litem  
Division.*



# DECISION PACKAGE

*In the years prior we have submitted a decision package to continue the salary savings for 5 vacancies. This year's package includes the salary savings for 4 positions and a partial savings on the 5<sup>th</sup>, a result of under-filling the Supervising Attorney vacancy with an Attorney II position.*

*Our estimated savings for 2013 will be*  
*\$285,123.00*





# DECISION PACKAGE

## *Salary Savings*

<i>Probation Mgr.</i>	<i>Grade C51</i>	<i>\$87,492</i>
<i>Probation Supv.</i>	<i>Grade C42</i>	<i>\$73,978</i>
<i>Intake Officer</i>	<i>Grade B25</i>	<i>\$61,879</i>
<i>Court Assoc II</i>	<i>Grade B21</i>	<i>\$44,243</i>
<i>Under-Fill Attny</i>	<i>Grade 302</i>	<i>\$17,531</i>
<i>Total</i>		<i>\$285,123</i>



# DECISION PACKAGE

## BUDGET SAVINGS 2008 - 2011

### *Juvenile Court Actuals*

2008	2009	2010	2011	%CHANGE
6.35	6.47	5.90	5.70	<b>-10.31%</b>

*\*\* We project 2012 savings to be similar*



# MISSION

*The mission of the Juvenile Court of  
Gwinnett County is:*

*To enhance the likelihood of rehabilitation and  
behavior reform of delinquent children so that they  
shall be restored, if possible, as secure law-abiding  
members of society.*

*To provide the forum, personnel, and facilities  
required for the fair, impartial and  
efficient administration of justice.*



# MISSION

*The mission of the Juvenile Court of  
Gwinnett County is:*

*To ensure that each child coming before the court  
shall receive the care, guidance, and control that is  
in the best interest of the child and the safety of the  
citizens of Gwinnett County and the State of  
Georgia.*

*To promote the healing and recovery of abused and  
neglected children and to promote permanency for  
those that have been removed from their home.*



# VISION

*The Juvenile Court's vision is to achieve excellence by providing quality services for the positive development of children, the safety of the community, and the preservation of the family unit.*



# OVERVIEW

*The Juvenile Court is a constitutional court. We are governed by State and Federal Statutory laws and rules. These laws and rules authorize the operation and jurisdiction of the court.*



# OVERVIEW

*The Juvenile Court has jurisdiction of delinquent children under the age of 17 years and deprived and unruly children under the age of 18 years.*

*Cases in Juvenile Court have more than 20 separate time limits that mandate when legal documents and orders must be filed and when hearings must be scheduled.*



# OVERVIEW

*We will schedule more than 9,000 hearings in Juvenile Court this year.*

*With the mandated time limits, we have more than 2,300 children that will be scheduled for a future hearing or review.*

*Managing these children is in addition to the more than 9,500 new charges on more than 6,400 new children expected in 2012.*





# OVERVIEW

*The Juvenile Court currently has 56 full-time employees, down from 61 employees in January of 2010*

*We have 7 divisions:*

<i>Clerks Division</i>	<i>7</i>	<i>employees</i>
<i>Intake Division</i>	<i>7</i>	<i>employees</i>
<i>Probation Division</i>	<i>15</i>	<i>employees</i>
<i>Guardian ad litem</i>	<i>9</i>	<i>employees</i>
<i>Volunteer Resources</i>	<i>3</i>	<i>employees</i>
<i>Administration</i>	<i>6</i>	<i>employees</i>
<i>Judicial</i>	<i>9</i>	<i>employees</i>

*This Staffing reduction last year reduced our 2012 service level by \$397,921*

*Just this reduction alone was a 6.5% savings from our 2008 service*



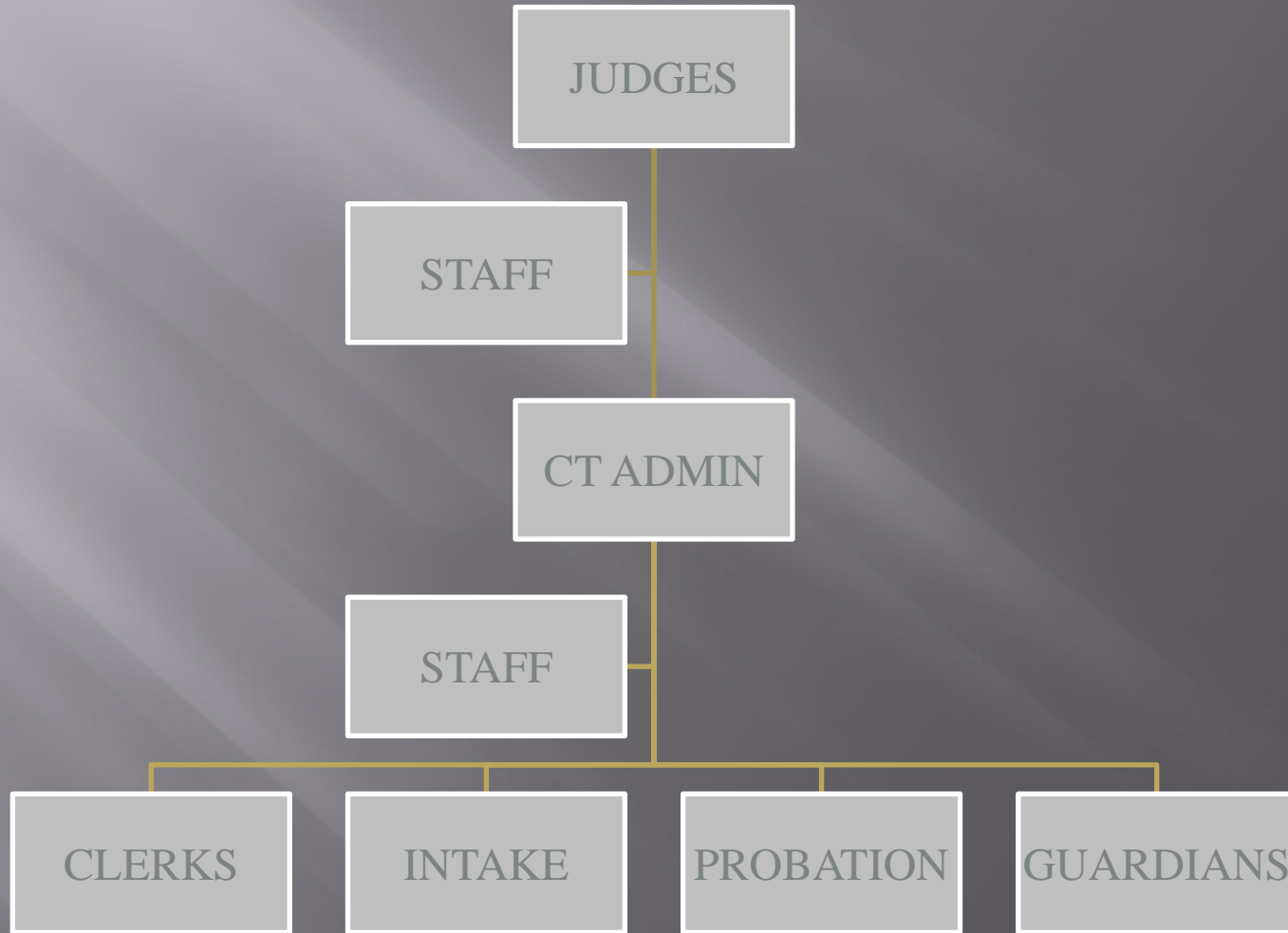
# STAFF COMPARISON

	Cobb	DeKalb	Fulton	Gwinnett
School Enrollment*	115,128	98,375	144,600	167,030
Court Staff	76	90	154	56

\* School enrollment includes all public schools



# ORGANIZATION



# CASELOADS

## *Clerk of Court*

*Will enter more than 10,000 dispositions in 2012.*

*Will file-in and scan more than 140,000 documents in 2012.*

*Will handle more than 8,000 financial transactions.*

*Will enter more than 9,500 new cases in 2012.*

*This office also staffs the reception windows for our court and maintains the courts filing system.*



# CASELOADS

## *Intake*

*Intake will be assigned more than 6,900 cases in 2012.*

*Intake has an average of 142 open cases per officer.*

*Each officer will petition more than 700 charges.*

*Intake staff will meet with more than 2,500 walk-in citizens.*

*Intake staff will handle more than 2,000 after-hours calls for intake decisions.*



# CASELOADS

## *Guardian Ad litem Office*

*Average more than 1,000 open cases per attorney.*

*Attorneys will prepare for and attend more than 4,500 hearings in 2012.*

*Attorneys will handle 400 custody transfers in 2012.*

*The three Case Coordinators conduct interviews with each child, make recommendations, and assist the attorneys in preparing their cases.*



# CASELOADS

## *Probation*

*Currently supervises more than 500 youth.*

*Will have more than 2,500 youth participate in classes and programs in 2012.*

*Will administer more than 800 drug screens in 2012.*

*Will file more than 500 Violations of Probation in 2012.*

*Will make more than 6,000 home and school visits in 2012.*



# VOLUNTEER RESOURCES

*The Juvenile Court has been utilizing volunteers from our community for 20 years. This includes Citizen Panels to review case plans on deprivation cases, Youth Diversion Panels to assess consequences on minor delinquent cases, and CASA Workers to advocate on behalf of deprived children. Attorneys also volunteer to represent children in our Truancy Intervention Program.*





# VOLUNTEER RESOURCES

*Volunteers perform a valuable service to the Juvenile Court and our community. We estimate that yearly they perform and save more than \$200,000 worth of work for Gwinnett County.*



# COMMUNITY INTERACTION

## *Families*

*According to the 2010 Census:*

*42% of the families in Gwinnett County have children under 18.*

*There are 28,768 single-parent households.*

*11% or 90,743 people live below the poverty level in Gwinnett County.*



# COMMUNITY INTERACTION

## *Neighborhoods*

*The majority of juvenile-related property crimes and crimes against persons are committed within walking distance of the residence of the offender.*

*One unsupervised incorrigible child can threaten the peace of the whole neighborhood.*

*Juvenile Court Intake Staff work with victims and neighbors to bring the youth under the Court's supervision.*

*Juvenile Court Probation Staff go into neighborhoods and work with families and supervise youth in their homes.*



# COMMUNITY INTERACTION

## *Schools*

*Gwinnett County has the largest school system and the largest Juvenile Court at-risk population in the State of Georgia.*

*The Gwinnett School System is 2<sup>nd</sup> only to the Gwinnett Police Department in filing charges in Juvenile Court.*



# COMMUNITY INTERACTION

## *Schools*

*Juvenile Court Staff work with School Officers, Teachers, Counselors and Administrators to provide intervention and resources.*

*Working together with our School System to assure a safe and positive learning environment for our students.*



# CHALLENGES

## *Guardian Ad litem Office*

*Transfer cases have increased from 147 in 2007 to a projected 400 in 2012.*

*This increase along with their caseload of Deprivations, Termination of Parental Rights, legitimations, Guardianships, and Bypass hearings highlights the need to fill this vacancy.*

*Increasingly, on Domestic Cases, one or more parties are choosing to be Pro se. This is causing delays and continuances and also added workload on the Guardian Ad litem's office.*



# CHALLENGES

## *Drug Court*

*The Juvenile Court is in the process of seeking grant funds and treatment court funds to establish a Juvenile Court Drug Court in Gwinnett.*



# CHALLENGES

## *Drug Court*

*Drug Courts have proven to be an effective method of treating these offenders.*

*The youth selected for the program will have committed multiple drug related/involved offenses.*

*We expect that to maintain a caseload of 40 youth in the program.*

*These offenders will be held accountable for their behavior and receive intensive treatment, supervision, and continuous judicial oversight.*





# CHALLENGES

*Since 2009 there has been a bill in the State Legislature to revamp the existing Juvenile Code. The push for this change is stronger each year. The Judges and Staff at our Court are certain that many of the changes proposed are unnecessary, costly, and not in the best interest of the children and families we serve.*

*Last legislative session concerns about the cost of this bill voiced by County Commissioners here in Gwinnett and throughout the state successfully stopped this bill.*

